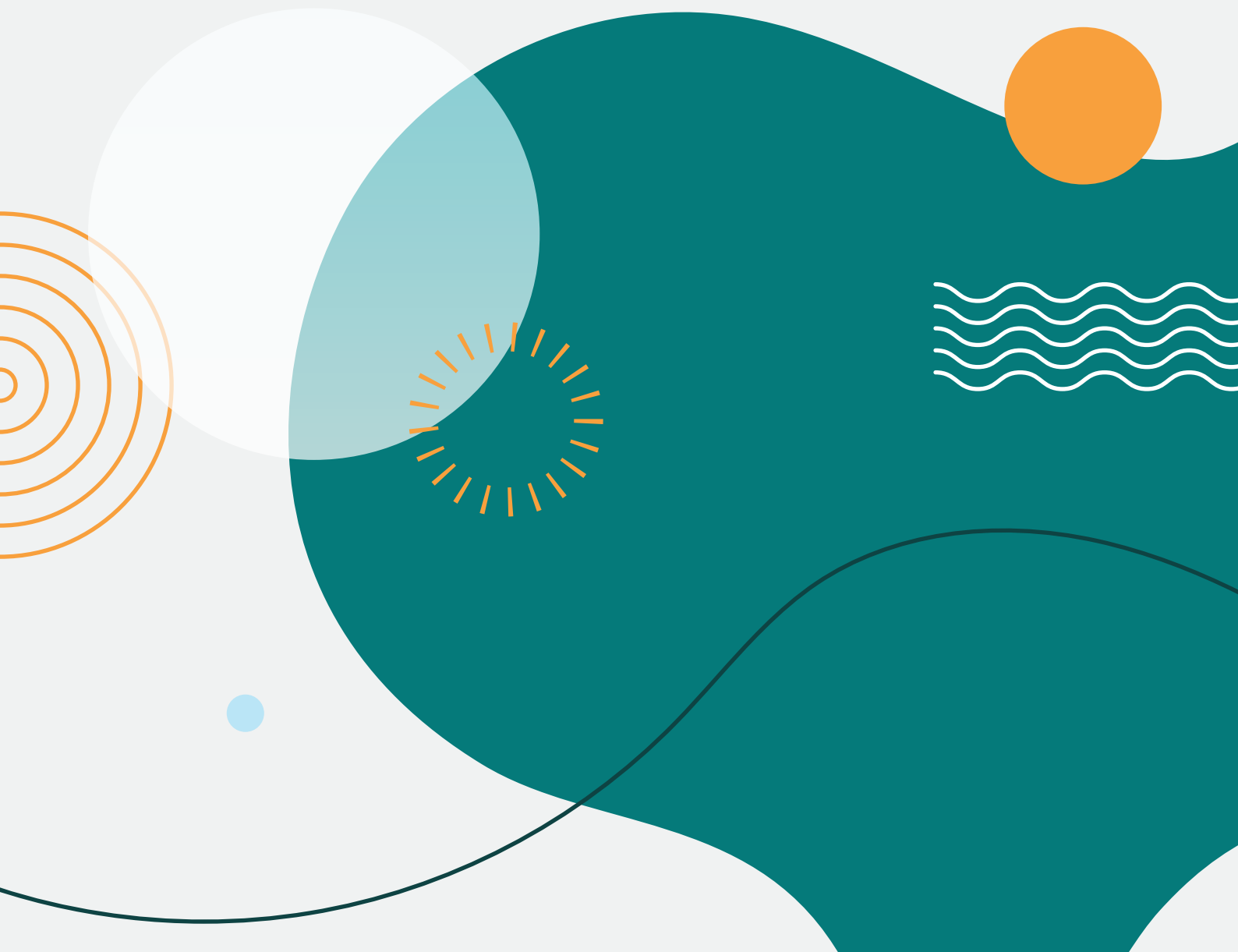
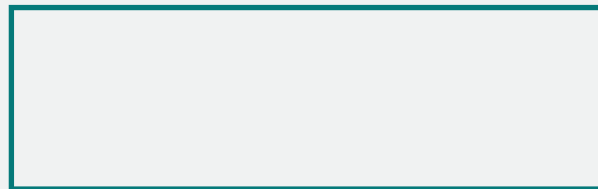
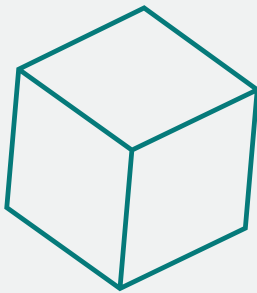




# STUDENT HANDBOOK

Master of Economics

International Program



## M.Econ @ CMU



### About Us

The Faculty of Economics at Chiang Mai University (CMU) aims to promote education, impart knowledge of economics, and produce professional economists to meet the demands of both governmental and private agencies in Northern Thailand, as well as throughout the world. The Faculty of Economics CMU started to offer the bachelor degree in Economics in 1964. In response to CMU's policy of producing high quality graduates at the master's degree level in a timely and time-intensive manner, the Faculty of Economics launched the Master of Economics Program (International Program) in 2013.

The Master of Economics Program (International Program) focuses on academic excellence in economic theories, quantitative analysis, research skills and the applications to economic and social problem solving. The program aims to develop a strong foundation leading to a lifelong learning skill to extend knowledge to the doctoral level and research careers, as well as ability to adapt to future changes in the world economy.

## Contents

	Page
About M.Econ @ CMU	1
Contents	2
Program information	3
- Title of the Degree	3
- Class Hours	3
- Time Period of Regular Study Program	3
- Tuition Fee	3
- Structure of the Program	4
- Study plan	7
Course description	8
Lecturers and Program Personnel	22
Chiang Mai University Regulations/Announcement	
- Chiang Mai University Regulation on Graduate Education 2559 B.E.	
- Chiang Mai University Regulation on Graduate Education 2561 B.E. (Issue No.2)	
- Foreign Language Conditions for Graduate Students	
- Criteria and Operating Procedure for Thesis Publication	

## Program Information

### Title of the Degree

Name of the Curriculum	:	Master of Economics Program (International Program)
Name of the Degree	:	Master of Economics
Abbreviation of the Degree	:	M.Econ.

### Class Hours

The classes for international master degree program will be conducted in regular hours between 08:00 a.m. through 04:30 p.m., Monday through Friday.

### Time Period of Regular Study Program

The minimum time requirement is two years and does not exceed five years.

### Tuition Fee

1. Tuition fees for the duration of the four semesters are charged on a lump sum basis of 140,000 Baht for the whole degree program or 35,000 Baht per semester. This lump sum includes the student enrollment fee, university registration fee, university fee, library service fee, university sporting activities fee, university activity fee, student card fee, laboratory fee, technology and computer service fees, registration document fee, and economic student fee.

2. If the students cannot complete their study within 4 semesters of regular program, they are required to enroll for university services and pay Baht 10,000 as a tuition fee per semester.

Year	Semester	Tuition Fee	Student Status Fee	Total
1 <sup>st</sup>	1 <sup>st</sup>	35,000	-	35,000
	2 <sup>nd</sup>	35,000	-	35,000
2 <sup>nd</sup>	1 <sup>st</sup>	35,000	-	35,000
	2 <sup>nd</sup>	35,000	-	35,000
Student cannot complete study within 3 semesters of regular program (or 1.5 years)				
3 <sup>rd</sup>	1 <sup>st</sup>	-	10,000	10,000
	2 <sup>nd</sup>	-	10,000	10,000

\*\* Other fees may also be added if there is an announcement by the Chiang Mai University administration. Foreign students are responsible for buying private health insurance which must be active for all expenses that may be occurred in Thailand.

## Structure of the Program

### Degree Requirements

Coursework	:	a minimum of	31 credits
Thesis	:		12 credits
Total	:	a minimum of	43 credits

### Curriculum Structure

A. Coursework	a Minimum of	31 credits
1. Graduate Courses	a Minimum of	31 credits
1.1 Field of Concentration Courses	a Minimum of	31 credits
1.1.1 Required Courses		19 credits
751700	Communication in Economics	
751701	Microeconomic Theory	
751702	Macroeconomic Theory	
751703	Econometrics	
751705	Quantitative Analysis in Economics	
751706	Globalization and World Economy	
751708	Research Methodology in Economics	
1.1.2 Elective Courses	Minimum of	12 credits
Must be chosen from the following courses:		
Group I	Quantitative Economics	
Group II	Theory of Economics	
Group III	Monetary and Fiscal Economics	
Group IV	Resources Economics	
Group V	International Economics	
Group VI	Developmental Economics	
Group VII	Data Science for Economics	

#### 1.2 Other courses

The Student may enroll other graduate courses(s) under the agreement of the advisor.

## 2. Advanced Undergraduate Courses

In case the student lacks some basic knowledge which is necessary for education, the student must enrol some advanced undergraduate courses(s) under the recommendation of program administrative committee

B. Thesis      751799      Master's Thesis      12 credits

### C. Non-credit Courses

1. Graduate School requirement: a foreign language

2. Program requirement:      - None -

### D. Academic Activities

1. Students must participate and present in the thesis progress seminar at least once during the program. (The Faculty is responsible for the expenses actually incurred.)
2. Students must participate in an international conference at least once during the program.
3. Thesis or a part of the thesis must be
  - (1) published or accepted to publish in an international journal listed in an international database approved by Office of the Higher Education Commission or the regulations of the Office of the Higher Education Commission on the academic journal consideration criteria for dissemination of academic works 2019, where the student is the first author of at least 1 paper or;
  - (2) published or accepted to publish in an international journal not listed in an international database approved by Office of the Higher Education Commission or the regulations of the Office of the Higher Education Commission on the academic journal consideration criteria for dissemination of academic works 2019 that approved by the Faculty of Economics, Chiang Mai University. The student must be the first author of at least 1 paper or;
  - (3) published as a full paper in the proceedings and orally presented in an international conference approved by Faculty of Economics, Chiang Mai University, where the student is the first author of at least 1 paper.
4. Students must participate at least 1 workshop organized by the program *or* participate in a field trip in Thailand or foreign countries organized by the program or the Faculty of Economics, Chiang Mai University The main purpose of the field

trip is for the students to be exposed to the real world business environments for higher learning efficiency. Students are responsible for the expenses actually incurred only for abroad filed trip. In case of a Thailand field trip or any other equivalent activities, the faculty will be responsible for the expenses under the faculty's conditions and approval.) or other activities approved by the Graduate Study Committee, Faculty of Economics.

## Study Plan

### 1<sup>st</sup> Year

1 <sup>st</sup> Semester		Credits	2 <sup>nd</sup> Semester		Credits
751700	Communication in Economics	1	751703	Econometrics	3
751701	Microeconomic Theory	3	751706	World Economy	3
751702	Macroeconomic Theory	3	751708	Research Methodology in Economics	3
751705	Quantitative Analysis in Economics	3	751...	Elective Course	3
751...	Elective Course	3		Attend International Conference	
	Participate in the thesis progress seminar			Propose defend	
				Participate in the thesis progress seminar	
<b>Total</b>		<b>13</b>		<b>Total</b>	<b>12</b>

### 2<sup>nd</sup> Year

1 <sup>st</sup> Semester		Credits	2 <sup>nd</sup> Semester		Credits
751...	Elective Course	3	751799	Master's Thesis	12
751...	Elective Course	3		Thesis examination and publish full or partly paper	
	Participate and present in the thesis progress seminar			Defend proposal	
	Attend a workshop or participate in a field trip or other activities.			Field trip	
<b>Total</b>		<b>6</b>		<b>Total</b>	<b>12</b>

\*\*Total credits through the program must not less than 43 credits\*\*



## Course Description

**751700**                    **COMMUNICATION IN ECONOMICS**                    **3(3-0-6)**

Pre: None

The importance of communication in economics, planning and writing academic papers, planning for academic presentations, preparation of presentation materials and data visualization, oral presentation skills: academic seminar, professional public presentation skills, academic presentation skills: listening and discussion etiquette

**751701**                    **MICROECONOMIC THEORY**                    **3(3-0-6)**

Pre: None

Consumer behavior theory, production theory and cost theory, perfect market competition and imperfect market competition, game and bargaining theory, general equilibrium and welfare economics, information economics and asymmetric information, uncertainty, risk and choice under uncertainty, externalities and public goods

**751702**                    **MACROECONOMIC THEORY**                    **3(3-0-6)**

Pre: None

Real dynamic macroeconomic models, economic growth theory output, inflation, and stabilization; rational expectation, ramsey model and overlapping generation, real business cycle theory, imperfect market and impact to economy, implication of monetary and fiscal policy

**751703**                    **ECONOMETRICS**                    **3(3-0-6)**

Pre: None

The general linear model, statistical properties of the least squares estimator, the linear restriction estimator, multicollinearity, generalized least squares method, heteroscedasticity, autocorrelation, model selection, systems of regression equations, limited dependent variables, stochastic frontier estimation



**751708 RESEARCH METHODOLOGY IN ECONOMICS 3(3-0-6)**

Pre: At least 2 courses in economics at 700 level

Basic knowledge for conducting economics research, research characteristic and classification, method of social research; selecting a research topic, title and identifying the research problem; theory, conceptual framework and model; research assumption, literature review, data analysis, research methods and procedures, writing and presenting the research

**751710 BAYESIAN ECONOMETRICS 3(3-0-6)**

Pre: None

Introduction to bayesian, single-parameter model, multiparameter model, Markov Chain Monte Carlo methods, hierarchical modeling, model comparison, regression model, gibbs sampling, Bayesian estimator in economics

**751711 COMPUTABLE GENERAL EQUILIBRIUM ANALYSIS FOR ECONOMIC POLICY EVALUATION 3(3-0-6)**

Pre: None

Introduction to I-O analysis, understanding the I-O table, building an I-O table, calculating output and employment multipliers, conducting simulation scenarios using I-O analysis, introduction to SAM analysis, case study of I-O analysis, introduction to CGE modeling, economic theories building up to CGE modeling, introduction to GTAP model, using GTAP model, using GTAP model.

**751712 ECONOMIC AND BUSINESS FORECASTING 3(3-0-6)**

Pre: Consent of the instructor

Quantitative forecasting in economics and business, forecasting with extreme value analysis, selected topics in advanced forecasting methods, and other forecasting techniques





**751726**                    **ECONOMICS THEORY OF INVESTMENT IN**                    **3(3-0-6)**  
**FINANCIAL MARKETS**

Pre: Consent of the instructor

Financial system and structural of financial market, capital market theory, debt market theory, portfolio management, analysis and valuation of equity instruments, analysis and valuation of debt instruments, analysis and valuation of portfolio management, analysis and valuation of derivatives, technical analysis, introduction to risk management.

**751727**                    **ECONOMIC PROJECT PLANNING AND**                    **3(3-0-6)**  
**EVALUATION**

Pre: Consent of the instructor

Introduction to projects and its examples writing project proposal for investment and economic and development project, project appraisal for project selection, financial feasibility analysis, Cost-benefit analysis, principles of project planning, project management and monitoring, project evaluation techniques, basic computable general equilibrium model, social return on investment analysis

**751728**                    **BEHAVIORAL ECONOMICS**                    **3(3-0-6)**

Pre: None

Introduction to behavioral economics, rational choice, prospect theory, bounded rationality such as mental accounting, limited information and irrational decision making; dual-system theory such as availability and affect, salience and status quo bias; temporal dimensions such as time discounting and present bias, diversification bias and the empathy gap, forecasting and memory; social dimensions such as trust and dishonesty, fairness and reciprocity, social norms and consistency

**751729**                    **SELECTED TOPICS IN ECONOMIC THEORY**                    **3(3-0-6)**

Pre: None

Study of selected topics in economics theory relevant to students' research topics, and according to academic and contemporary situations.

**751730 PUBLIC ECONOMICS POLICIES 3(3-0-6)**

Pre: None

Introduction to Public Policy and Ethics for Policy Analysts, Markets and Rational Behavior, Efficiency and Imperfect Markets, Public Choice Theory, Public Policy for Public Goods, Value of Life and Other Non-Marketed Goods, Benefit–Cost Analysis of Public Policy, Net Benefits Over Time and Present Value, Public Policy Analysis Involving Risk and Uncertainty, Methods for Creating and Enforcing Public Policies, Application of Public Economics Policies in Various Economic Fields, Public Policy and Political Economy.

**751732 ECONOMICS OF MODER MONEY AND BANKING 3(3-0-6)**

Pre: None

Modern Monetary System, Financial Technology and Financial Intermediaries, Digital Money and Blockchain, Economics for Modern Financial System, Basel Committee on Banking Supervision (BCBS) and Risk Management in Banking, Economics of Digital Banking, Modern Central Bank, Financial Vulnerability and Financial Crisis, Modern Monetary Policies, Financial Stability and Macroeconomic Policies.

**751734 DERIVATIVES IN FINANCIAL ECONOMICS 3(3-0-6)**

Pre: None

Basic concepts of financial derivatives markets, hedging strategies using future contract, determination of forward and futures prices, swaps trading, mechanics of options markets, trading strategies involving options, binomial tree calculation, wiener processes and ito's lemma for finance, value at risk, estimating volatilities and correlations.

**751736 FINANCIAL ECONOMICS MODELLING 3(3-0-6)**

Pre: None

Financial economics modeling to forecast the price, return and risky of financial assets, foreign exchange rate, futures contracts, and various risk assets by time series econometrics model artificial intelligence and simulation based on financial economics theory, game theory, chaos theory back, Reflexivity theory, Market equilibrium and market efficiency assumptions, Portfolio optimization, Hedging, Arbitrage, Volatility spillover and Volatility dependence..

**751737                      ECONOMICS OF DECENTRALIZED FINANCE (DeFi)                      3(3-0-6)**

Pre: None

The mechanism of Blockchain and Smart Contract, crypto currencies and token exchange, the mechanism of Governance token and yield farming, the mechanism of stable coin and synthetic asset Token, DeFi related businesses such as auto-Compound Farming business, dashboard business, leverage farming business, lending and borrowing business, insurance business, portfolio management business, decentralized multi-chain, Fund management business and lunchpad business, the mechanism of Non-Fungible Token (NFT), NFT related businesses such as GameFi and gambling.

**751739                      SELECTED TOPICS IN MONETARY AND FISCAL                      3(3-0-6)**  
**ECONOMICS**

Pre: None

Study of selected topics in monetary and fiscal economics relevant to students' research topics, and according to academic and contemporary situations.

**751741                      MARKETING ECONOMICS                      3(3-0-6)**

Pre: None

Microeconometric models of demand, economic inference for marketing decisions, conjoint analysis for marketing strategies, consumer decision-making under uncertainty, digital marketing in digital economy, economic evolution of brands and branding, economics of retailing and distribution, dynamic model of differentiated products oligopoly, advertising strategy in economic perspective, salesforce management and channel strategy in economic perspective, marketing and public policy, marketing and sales strategies during economic crisis.

**751742                      SUPPLY CHAIN ECONOMICS                      3(3-0-6)**

Pre: None

Supply chain economic governance, supply chain economic strategies, supply chain economic collaboration, economic forecasting for supply chain management, and economic equilibrium in supply chain



**751743**                    **LABOR ECONOMIC ANALYSIS AND POLICY**                    **3(3-0-6)**

Pre: None

Labor supply, labor demand, labor market equilibrium, basic econometrics for labor economics, wage structure and income inequality, human capital, compensating wage differentials, labor mobility, current topics in labor economics.

**751744**                    **ENTREPRENEURIAL ECONOMICS**                    **3(3-0-6)**

Pre: None

Roles of entrepreneurs in economic development, microeconomic and macroeconomic theories and methods related to entrepreneurship, financial economics for entrepreneurship, economic performance measurement for entrepreneurship, public policies for economic development and entrepreneurship, and case studies in entrepreneurial economics.

**751745**                    **ECONOMICS OF NATURAL RESOURCES AND**                    **3(3-0-6)**  
**ENVIRONMENT**

Pre: None

Economic role and knowledge with ecological restoration, economic theories for environment regulations, environmental, dynamic efficiency models of natural resources use, energy transitions and material recycles, management of water, land, forests and common pool resources, regulations of air, water pollution and toxic waste, economics and climate change, environmental health, risk perception and risk communication, case studies on natural resources and development.

**751749**                    **SELECTED TOPICS IN RESOURCE ECONOMICS**                    **3(3-0-6)**

Pre: None

study of selected topics in resources economics relevant to students' research topics, and according to academic and contemporary situations.

**751751                    INTERNATIONAL TRADE AND INVESTMENT                    3(3-0-6)**

Pre: None

The international trade theory of the Classical, Neoclassical, and Modern Trade Theory such as models with increasing returns to scale, imperfect competition, differences in demand pattern, multinational corporation theory, the relationship between trade in goods, services and factors of production, international trade policy, and selected issues international trade and investment.

**751752                    INTERNATIONAL TRADE AND FINANCE                    3(3-0-6)**

Pre: Consent of the instructor

Trade theory and trade policy, trade laws of major trading countries, economic integration and trade blocs, and the role of GATT in international trading system. The balance of payments and its impact on domestic macro economy exchange rates and foreign exchange market, and government policies for external equilibrium.

**751754                    ASEAN ECONOMY                    3(3-0-6)**

Pre: None

Introduction to the integration of the countries in the region, Structure of ASEAN and challenges of ASEAN Economic Community (AEC), Economic structure of ASEAN's member countries and ASEAN: Upper ASEAN countries: Thailand, Myanmar, Laos, Cambodia, and Vietnam, Lower ASEAN countries: Malaysia, Singapore, Indonesia, Brunei, and the Philippines, Linkages of logistic, commerce and financial with in ASEAN countries and outside ASEAN group, Roles of ASEAN integration in trade and investment aspects, Context of normative and legal issues and problems of ASEAN in economic, trade, financial, social, political, and cultural aspects related to Thailand's roles in ASEAN platform, Context of normative and legal issues and problems of ASEAN in economic, trade, financial, social, political, and cultural aspects related to Thailand's roles in ASEAN platform, Obstacles and challenges of ASEAN integration and ASEAN economic policy in the future, Case study of current issues of ASEAN countries.

**751755                    INTERNATIONAL BUSINESS ECONOMICS                    3(3-0-6)**

Pre: None

Principles of international business economics, international business strategies in current economic situations. The US, EU, Chinese, Japanese, Russian and Middle East markets. Cultures' and consumers' behaviors. Import regulations. Products-standards. Markets-entries. Political economy between the US, EU, China, Japan Russia, Middle East and major countries such as India, Korea and others that effect international business.

**751756                    MODERN CHINESE ECONOMY                    3(3-0-6)**

Pre: None

Chinese economic reform and opening up policy, Special economic and technical development zones in China, High purchasing power cities and counties, Foundation for success of light and heavy industries and their trend, International trade and foreign direct investment of China, One Belt One Road policy, Product development and branding for Chinese markets, Trade opportunities and cooperation possibilities in China

**751759                    SELECTED TOPICS IN INTERNATIONAL                    3(3-0-6)**  
**ECONOMICS**

Pre: None

study of selected topics in international economics relevant to students' research topics, and according to academic and contemporary situations.

**751761                    ECONOMIC DEVELOPMENT                    3(3-0-6)**

Pre: None

Concepts and theories related to economic growth and economic development, problems and solutions towards development, for example, poverty, income inequality, urbanization, health and education, and environment, especially in the developing countries, sustainable economic development, policies and plans of economic development in the various countries and current issues in economic development

**751762 HEALTH ECONOMIC ANALYSIS AND POLICY 3(3-0-6)**

Pre: None

Basic concepts in health economics; need, demand for and supply of health care; market failure and the role of government in health care, health insurance, health care financing, equity in health care system, economic evaluation in health, health and economic development, health care system and analysis of health problems in Thailand

**751766 TOURISM ECONOMICS 3(3-0-6)**

Pre: None

Concepts, theories and measurement of tourism economics by presenting the special characteristics of tourism products and tourism industry, theory and an analysis of tourism demand, the concept of assessing tourism competitiveness, and the concept of economic impact assessment of tourism.

**751769 SELECTED TOPICS IN DEVELOPMENT ECONOMICS 3(3-0-6)**

Pre: None

Selected topics in development economics; theory, application, or empirical studies which were not studied or emphasized in other courses.

**751771 ARTIFICIAL INTELLIGENCE FOR ECONOMIC APPLICATIONS 3(3-0-6)**

Pre: None

Artificial intelligence technologies, artificial neural networks, genetic algorithm data mining and related mathematics and statistics for prediction of economic variables, classification, association, clustering and anomaly detection and applications in financial industries, commerce and other industries including decision making in microeconomics and macroeconomics.

**751772                    MACHINE LEARNING FOR QUANTITATIVE                    3(3-0-6)**  
**ANALYSIS**

Pre: None

The basic understanding of big data; supervised learning, unsupervised learning, reinforcement learning and deep learning for economic and business data analysis techniques; R-project and python programming for machine learning algorithms and machine learning applications for analysis and forecasting of economic and business variables.

**751773                    BIG DATA ANALYSIS IN ECONOMICS                    3(3-0-6)**

Pre: None

Data in 21st century, big data analysis software and tool, structured and unstructured data, classical econometrics and portfolio management, data mining, machine learning, sentiment analysis, high frequency data analysis, big data and fintech companies

**751774                    TOKENOMICS AND NON-FUNGIBLE TOKEN                    3(3-0-6)**

Pre: None

Intermediate contents of tokenomics and non-fungible token. Non-fungible token and arts, music and fund raising. Non-fungible token marketplaces and pricing strategies. Metaverse and tokenomics of metaverse. GamFi, tokenomics of GameFi and, economic and financial system design and GameFi investment strategies. Success and failure cases of GameFi.

**751775                    INTERMEDIATE LEVEL OF ECONOMICS OF                    3(3-0-6)**  
**FUNDRAISING**

Pre: None

The introduction and importance of fundraising for world and Thailand economies, and SMEs, financial market and Thailand financial market structure, issuing of securities, borrowing and securities debentures, subsidies and donations, crowdfunding and P2P lending, Initial Coin Offering (ICO) and launchpad business, fundraising in GameFi, regulations of fundraising in Thailand, pitching.



## Lecturers and Program Personnel



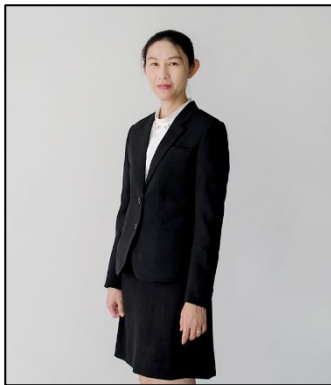
**Prof. Dr. Songsak Sriboonchitta**

Ph.D. (Agricultural Economics) University of Illinois,  
U.S.A.

**Fields of Expertise:** Econometrics, Economy  
Development, Finance, Fiscal and monetary Policy and  
Management, Macroeconomics Policy and Planning,  
Management and Productivity

**E-mail:** songsakecon@gmail.com

**Tel:** (66) 53 942266



**Assoc. Prof. Dr. Kunsuda Nimanussornkul**

Ph.D. (Economics), Chiang Mai University

**Fields of Expertise:** Econometrics, Finance

**E-mail:** kunsudan@gmail.com

**Tel:** (66) 53 942224



**Assoc. Prof. Dr. Kanchana Chokethaworn**

Ph.D. (Economics), Chiang Mai University, Thailand

**Fields of Expertise:** Macroeconomic Policy and  
Planning, Tourism, Community Economics,  
Development Sufficiency Economy

**E-mail:** patarahn41@gmail.com

**Tel:** (66) 53 942228



**Assoc. Prof. Dr. Chukiatt Chaiboonsri**

Ph.D., (Tourism Econometrics), Bangalore University,  
India

**Fields of Expertise:** Econometrics, Finance, Tourism  
Economics, Quantitative Analysis

**E-mail:** chukiatt1973@hotmail.com

**Tel:** (66) 53 942248



**Assoc. Prof. Dr. Thanes Sriwichailamphan**

Ph.D. (Environment Policy), Wageningen University,  
Netherlands

**Fields of Expertise:** Community Economics,  
Environmental Economics, Labor Economics,  
Microeconomics, Logit and Probit Model

**E-mail:** thanes@econ.cmu.ac.th

**Tel:** (66) 53 942233



**Assoc. Prof. Dr. Komsan Suriya**

Ph.D. (Economics) University of Gottingen, Germany

**Fields of Expertise:** Classification, Economic Choices,  
Innovation, Pattern Recognition, Poverty Analysis,  
Pricing Strategy

**E-mail:** suriyakomsan@yahoo.co.th

**Tel:** (66) 53 942581



**Assoc. Prof. Dr. Napat Hanpornchai**

Dr. techn, Universitaet Innsbruck, Innsbruck, Austria

**Fields of Expertise:** Econophysics, Application of Soft  
Computing and AI in Economics

**E-mail:** napateconcmu@gmail.com

**Tel:** (66) 53 942261





**Assoc. Prof. Dr. Nisit Panthamit**

Ph.D. (Economics), University of Wisconsin Milwaukee,  
U.S.A.

**Fields of Expertise:** International Economics,  
International Finance, ASEAN Economics, Industrial  
Organization

**E-mail:** nisit@econ.cmu.ac.th

**Tel:** (66) 53 942232



**Assoc. Prof. Dr. Piyaluk Buddhawongsa**

Ph.D. (Economics), Texas A&M University, U.S.A

**Fields of Expertise:** Labor Economics, Public  
Economics

**E-mail:** piyaluk@gmail.com

**Tel:** (66) 53 942220



**Assoc. Prof. Dr. Pathairat Pastpipatkul**

Ph.D. (Economics), Chiang Mai University, Thailand

**Fields of Expertise:** Econometrics, Investment,  
Technical Analysis, Finance

**E-mail:** ppthai@econ.cmu.ac.th

**Tel:** (66) 53 942226



**Assoc. Prof. Dr. Roengchai Tansuchat**

Ph.D. (Economics), Chiang Mai University

**Fields of Expertise:** Time Series Econometrics,  
Financial Econometrics, Agricultural International Trade

**E-mail:** roengchaitan@gmail.com

**Tel:** (66) 53 942223



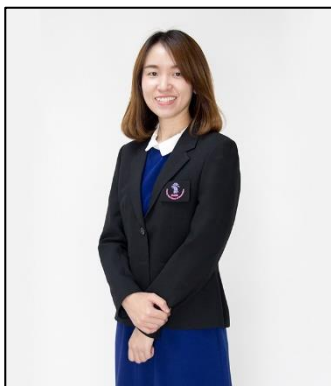
**Asst. Prof. Dr. Kunchon Wattanakul**

Ph.D. (Economics), University of Santo Tomas,  
Manila, Phillipines

**Fields of Expertise:** Economics Development,  
Monetary, Industrial and Labor Economics

**E-mail:** kunchon@econ.cmu.ac.th

**Tel:** (66) 53 942234



**Asst. Prof. Dr. Kannika Duangnate**

Ph.D. (Agricultural Economics) Texas A&M University,  
USA

**Fields of Expertise:** Energy Markets, Time Series  
Analysis

**E-mail:** kannika@econ.cmu.ac.th

**Tel:** (66) 53 942263



**Asst. Prof. Dr. Charuk Singhapreecha**

Ph.D. (Economic Development and Policies),  
Kobe University, Japan

**Fields of Expertise:** International  
Economics, Macroeconomic Policies Analysis,  
Computable General Equilibrium (CGE model)

**E-mail:** pongpong08@hotmail.com

**Tel:** (66) 53 942221



**Asst. Prof. Dr. Jirakom Sirisrisakulchai**

Ph.D. (Economics), Chiang Mai University,  
Thailand

**Fields of Expertise:** Microeconometrics

**E-mail:** sirisrisakulchai@hotmail.com

**Tel:** (66) 53 942217



**Asst. Prof. Dr. Chaiwat Nimanussornkul**

Ph.D. (Economics), Chiang Mai University, Thailand

**Fields of Expertise:** Time Series Analysis, Cost and Benefit Analysis, Financial Economics

**E-mail:** chawatnim@yahoo.com

**Tel:** (66) 53 942224



**Asst. Prof. Dr. Chatchai Khiewngamdee**

Ph.D. (Economics), Chiang Mai University, Thailand

**Fields of Expertise:** International Economics, Financial Economics, Economic Development and Policy, Macroeconomics

**E-mail:** getliecon@gmail.com

**Tel:** (66) 53 942225



**Asst. Prof. Dr. Chaowana Phetcharat**

Ph.D. (Agricultural Economics) Oklahoma State University, U.S.A

**Fields of Expertise:** Agricultural Economics (Production and Natural Economics)

**E-mail:** chaowana.p@cmu.ac.th

**Tel:** (66) 53 942223



**Asst. Prof. Dr. Napon Hongsakulvasu**

Ph.D. (Economics) Texas A&M University, U.S.A

**Fields of Expertise:** Macro, Econometrics, Time Series.

**E-mail:** napon@econ.cmu.ac.th

**Tel:** (66) 53 942259



**Asst. Prof. Dr. Nachatchapong Kaewsompong**  
Ph.D. (Economics), Chiang Mai University, Thailand  
**Fields of Expertise:** Macroeconomic, Financial  
Economic, Econometrics  
**E-mail:** Nachat\_flysky@hotmail.com  
**Tel:** (66) 53 942260



**Asst. Prof. Dr. Nuttamon Teerakul**  
Ph.D. (Economics), University of New England, Australia  
**Fields of Expertise:** Small and Micro Community  
Enterprise, Agricultural Economics  
**E-mail:** nteeraku@gmail.com  
**Tel:** (66) 53 942219



**Asst. Prof. Dr. Pithoon Thanabordeekij**  
Ph.D. (Economics), University of Wisconsin-Milwaukee,  
USA  
**Fields of Expertise:** Business Economics  
**E-mail:** pithoon.th@cmu.ac.th  
**Tel:** (66) 53 942231



**Asst. Prof. Dr. Pairut Kanjanakaroon**  
Ph.D. (Economics), Northern Illinois University, U.S.A.  
**Fields of Expertise:** Public Finance  
**E-mail:** pkanjana@hotmail.com  
**Tel:** (66) 53 942233



**Assoc. Prof. Dr. Paravee Maneejuk**

Ph.D. (Economics), Chiang Mai University, Thailand

**Fields of Expertise:** Macroeconometrics

**E-mail:** mparavee@gmail.com

**Tel:** (66) 53 942221



**Asst. Prof. Dr. Mayula Chaikumbung**

Ph.D. (Ecological Economics), Deakin University,  
Australia

**Fields of Expertise:** Environmental Economics

**E-mail:** mchaikum@gmail.com

**Tel:** (66) 53 942218



**Asst. Prof. Dr. Manoj Potapohn**

Ph.D. (Agricultural and Resource Economics),  
University of Hawaii at Manoa, U.S.A.

**Fields of Expertise:** Natural Resources, Environment  
and Development, Climate Change and  
Environmental Health

**E-mail:** potapohnm@gmail.com

**Tel:** (66) 53 942225



**Asst. Prof. Dr. Rossarin Osathanunkul**

Ph.D., Development Policy and Management,  
the University of Manchester, U.K.

**Fields of Expertise:** Development Economics, Public  
Finance, SMEs

**E-mail:** orossarin@gmail.com

**Tel:** (66) 53 942222



**Asst. Prof. Dr. Woraphon Yamaka**

Ph.D. (Economics), Chiang Mai University, Thailand

**Fields of Expertise:** Econometrics, Finance

**E-mail:** woraphon.econ@gmail.com

**Tel:** (66) 53 942220



**Asst. Prof. Dr. Warattaya Chinnakam**

Ph.D. (Economics), Chiang Mai University, Thailand

**Fields of Expertise:** Economic Development, Financial

Economic, Macroeconomic, Econometrics

**E-mail:** warattaya\_chin@hotmail.co.th

**Tel:** (66) 53 942217



**Asst. Prof. Dr. Woraluck Himakalasa**

Ph.D. (Medical and Health Social Sciences), Mahidol University, Thailand

**Fields of Expertise:** Health Economics, Public Finance, Poverty

**E-mail:** woraluck@gmail.com

**Tel:** (66) 53 942229



**Asst. Prof. Dr. Supanika Leurcharusmee**

Ph.D. (Economics), Chiang Mai University, Thailand M.A

**Fields of Expertise:** Applied Microeconomics

/Microeconometrics. Current works are in the fields of labor economics.

**E-mail:** supanika.l@cmu.ac.th

**Tel:** (66) 53 942260



**Asst. Prof. Dr. Anaspree Chaiwan**

Ph.D. (Economics), Chiang Mai University, Thailand

**Fields of Expertise:** Applied and Financial  
Econometrics

**E-mail:** aspree@gmail.com

**Tel:** (66) 53 942228



**Asst. Prof. Dr. Anuphak Saosaovaphak**

DBA (Supply Chain Management), Victoria University,  
Australia

**Fields of Expertise:** Supply Chain Management,  
International Trade, Tourism Economics

**E-mail:** anuphak@gmail.com

**Tel:** (66) 53 942248



**Asst. Prof. Suchat Promkutkeo**

M. (Economics), Eastern Michigan University, USA

**Fields of Expertise:** Money and Banking

**E-mail:** spromkutkeo@gmail.com

**Tel:** (66) 53 942231



**Lect. Dr. Kansinee Guntawongwan**

Ph.D. (Tourism and Environment Economics),

Universitat de les ILLes Balears, Spain

**Fields of Expertise:** Public Policy, Health Economics,  
Tourism and Environmental Economics

**E-mail:** kansineeg@gmail.com

**Tel:** (66) 53 942229



**Lect. Dr. Jirapa Inthisang Trochim**

Ph.D. (Economics), University of Colorado Boulder, USA

**Fields of Expertise:** Environmental Economics,  
International Economics, Agricultural Economics

**E-mail:** jirapa.trochim@gmail.com

**Tel:** (66) 53 942218



**Lect. Dr. Chanamart Intapan**

Ph.D. (Economics), Chiang Mai University, Thailand

**Fields of Expertise:** Economics, Marketing and Business

**E-mail:** chanamart.i@cmu.ac.th

**Tel:** (66) 53 942234



**Lect. Dr. Dr.Chonrada Nunti**

Ph.D. (Economics), Chiang Mai University, Thailand

**Fields of Expertise:** Agricultural Economics

**E-mail:** nuntichonrada@gmail.com

**Tel:** (66) 53 942219



**Lect. Dr. Tatcha Sudtasan**

Ph.D. in International Studies Waseda University, Japan

**Fields of Expertise:** Info-communication Economics,  
Business and Policy Analysis, Mathematical Economics

**E-mail:** s.tatcha.wsd@gmail.com

**Tel:** (66) 53 942255





**Lect. Dr. Tossapond Kewprasopsak**

Ph.D. (Behavioural Economics), University of Hohenheim, Germany

**Fields of Expertise:** Behavioral economics, Health and Behavioral economics, Agricultural and Behavioral economics, Environmental and Behavioral economics, Economics Aspect of Food security

**E-mail:** [tossapond.kew@cmu.ac.th](mailto:tossapond.kew@cmu.ac.th)

**Tel:** (66) 53 942261



**Lect. Dr. Patcha Chaikitmongkol**

Ph.D. (Agricultural and Applied Economics), University of Wisconsin–Madison, USA

**Fields of Expertise:** Development Economics: Immigration impact, labor market outcomes, structural change and education issues in Southeast-Asian economies

**E-mail:** [patcha.c@cmu.ac.th](mailto:patcha.c@cmu.ac.th)

**Tel:** (66) 53 942232



**Lect. Dr. Pairach Piboonrungrroj**

Ph.D. (Logistics and Supply Chain Management), Cardiff University, UK

**Fields of Expertise:** Logistics & Supply Chain Management, Tourism Economics, Econometrics with R, MICE (Meetings, Incentive Travels, Conventions, Exhibition)

**E-mail:** [me@pairach.com](mailto:me@pairach.com)

**Tel:** (66) 53 942222



**Lect. Dr. Pakpoom Saengkanokkul**

Ph.D. (Economy and Societies), Institut National des Langues et Civilisations Orientales (INALCO)

**Fields of Expertise:** Health economics, Political Economy.

**E-mail:** pakpoom.sa@cmu.ac.th

**Tel:** (66) 53 942255



**Lect. Dr. Mattana Wongsirikajorn**

Ph.D. (Environmental and Natural Resource Economics), University of Rhode Island, USA

**Fields of Expertise:** Applied Microeconomics, Resource Economics, Development Economics, Behavioral Economics, Field Experiment, and Social-Ecological systems

**E-mail:** mattana.w@cmu.ac.th

**Tel:** (66) 53 942238



**Lect. Dr. Worrawat Saijai**

Ph.D. (Economics), Chiang Mai University, Thailand

**Fields of Expertise:** Economics, Econometrics

**E-mail:** worrawat13@hotmail.com

**Tel:** (66) 53 942238



**Lect. Dr. Saowaluk Duangin**

Ph.D. (Economics), Chiang Mai University, Thailand

**Fields of Expertise:** Financial Economics, Economic Growth

**E-mail:** saowaluk.econ@gmail.com

**Tel:** (66) 53 942263



**Ms. Monlika Kanyapanich**  
**Head of Academic Affairs and Student  
Development Section**  
**E-mail:** monlika14@gmail.com  
**Tel:** (66) 53 942250



**Ms. Pitchayakorn Norruen**  
**Head of Undergraduate Affairs Unit**  
**E-mail:** phitcha.no@gmail.com  
**Tel:** (66) 53 942213



**Mrs. Yupawadee Intawong**  
**Head of Graduate Affairs Unit**  
Master Degree Program Coordinator  
(Regular Program and Weekend Program)  
**E-mail:** yupawadee.econ@gmail.com  
**Tel:** (66) 53 942251



**Ms. Siriporn Suanpoot**  
Ph.D Program Co-ordinator / Double Degree  
program Co-ordinator  
**E-mail:** phd.econ@cmu.ac.th  
**Tel:** (66) 53 942252



**Ms. Jongkolnee Sritiruan**

Undergraduation Program Officer  
(International program)

**E-mail:** inter.becon.cmu@gmail.com

**Tel:** (66) 53 942213



**Mr. Suwit Pintapia**

Undergraduate Affairs Officer

**E-mail:** suwit@econ.cmu.ac.th

**Tel:** (66) 53 942213



**Ms. Tidarat Chaokhieowong**

Master Degree Program Coordinator  
(International Program)

**E-mail:** chaokhieowong@gmail.com

**Tel:** (66) 53 942251



**Ms. Radamas Yeewa**

Academic Affairs and Student  
Development Section Officer

**E-mail:** academic.econcmu@gmail.com

**Tel:** (66) 53 942251



**Mr. Arnon Supasri**

Cooperative Education Coordinator

**E-mail:** econ.co.edu@gmail.com

**Tel:** (66) 53 942252

### Student Development Unit



**Mrs. Daret Ngaodet**

Head of Student Development Unit

**E-mail:** darest@econ.cmu.ac.th

**Tel:** (66) 53 942249



**Mr. Songphon Bunrueanya**

Student Development Officer

**E-mail:** songphon@econ.cmu.ac.th

**Tel:** (66) 53 942249



**Ms. Darika Sriwut**

Student Development Officer

**E-mail:** darika.s@cmu.ac.th

**Tel:** (66) 53 942250

(Translation)

**Chiang Mai University Regulation  
on Graduate Education  
2559 B.E.**

To ensure that the Graduate Education of Chiang Mai University complies with the objectives and principles of the National Education Act 2542 B.E., the 2<sup>nd</sup> revision of National Education Act 2545 B.E., the Higher Education Standard Criteria and Graduate Education Standard Criteria set by the Ministry of Education and the Thai Higher Education Qualification Framework.

According to the virtue of section 25(3) of Chiang Mai University Act 2551 B.E. along with the recommendation of the University Academic Council and the resolution of the University Council meeting no. 7/2559 on 23 July 2559 B.E., the Graduate Education Regulation is set as follows

No. 1 This regulation is referred to as “Chiang Mai University Regulation on Graduate Education 2559 B.E.”

No. 2 This regulation is effective for graduate students who study in a graduate diploma, master’s degree, higher graduate diploma or doctoral degree program offered by Chiang Mai University from the academic year 2559 (2016) on.

No. 3 Existing regulations, rules, orders and announcements which conflict or contradict to this regulation are replaced by this regulation.

No. 4 In this regulation

“University” means Chiang Mai University.

“Higher education institution” means any other higher education institution certified by the Office of Higher Education Commission or by Chiang Mai University, as the individual case may be.

“Graduate School” means Graduate School of Chiang Mai University.

“Sector” means faculty, college, school or any other academic sector that provides teaching and learning activities complying with this regulation.

“Instructor” means a full-time academic staff member in the position of lecturer, assistant professor, associate professor, professor or specialist instructor who is responsible for the mission of higher education.

In case of joint institutional program, instructor(s) of the joint institution who is qualified by this regulation may be appointed as a full-time instructor, full-time graduate instructor, program instructor or academic program instructor, as the case may be in accordance with this regulation.

“Special instructor” means a teaching staff member who is not the instructor.

“Graduate school instructor” means a qualified instructor who is appointed by the university to work as a graduate instructor, thesis advisor, thesis examiner, qualification examiner and/or comprehensive examiner.

“Program instructor” means a qualified graduate school instructor who is responsible for teaching and doing research in the specified field or related area.

“Academic program instructor” means a program instructor who is responsible for program administration and development together with teaching and learning, since program

planning, quality control, monitoring and evaluation, and program development for the whole period of program education. *(Executive program committee comprises academic program instructors and representatives from concerning academic sectors)*

Academic program instructor shall not be responsible for more than one program at the same time, except master's and doctoral degree programs in the same field, or for multidisciplinary or interdisciplinary program, executive program instructor may be responsible for one more program, but not more than two repeated executive program instructors.

“Specialist instructor” means a full-time academic expert, highly experienced or well-known personnel of the university in a specific field or related area to the graduate program.

“Qualified person” means an internal staff member other than specialist instructor, or an external knowledgeable, expert, highly experienced or well-known person in a specific field or related area to the graduate program.

“Academic work” means an academic work which is not a part of study for a degree and is published in complying with the criteria for academic position appointment.

“Multidiscipline” means a discipline which is a composition of two or more major distinct disciplines, or a management or a program that students are able to learn subjects from two or more major distinct disciplines then apply them for a profession.

“Cross Discipline” means a discipline using knowledge of other disciplines to view, describe or solve the problem in the discipline.

“Interdiscipline” means a new discipline caused by harmonious integration of two or more major distinct disciplines, thus inventing a new tool, model or method that cannot be accomplished by using single distinct discipline separately.

“Transdiscipline” means a discipline which is a simultaneous composition, integration and fusion of one or more major distinct disciplines for solving a complex problem successfully and effectively.

“Broadband Discipline” means a broad discipline that covers several continuous and relating disciplines.

“Dual degree” means a program or an education that the graduates receive dual degree from a single university or from different universities, either within domestic or foreign countries. In general, dual degree is classified into 3 types, *i.e.*, double degree, joint degree, and second degree.

“Double degree” means a program or an education that the students are able to study and succeed 2 regular programs at the same time, with 2 separate degrees earned.

“Joint degree” means a program or an education that is jointly developed by institutions. The graduates will receive a single degree that appears the emblems and signed by the presidents or authorized persons of the joint institutions.

“Second degree” means a program or an education that the students have the opportunity to extend their study in another program for a second degree after succeeding the first degree, with two separate degrees earned from both programs.

“Thesis” means a composition of chapters with description and explanation from a research work, search or study under a title which is a part of study for a degree. Thesis is classified into 3 types, *i.e.*, Dissertation which is referred to a thesis for doctoral degree, Master's thesis which is referred to a thesis for master's degree, and Independent Study (I.S.).

“Foreign language” means a language other than Thai language.

No. 5 Graduate School has the duty to arrange, control and direct the graduate education complying with this regulation, together with collecting and publishing lists of names and qualifications of graduate school instructors, special instructors, specialist instructors, qualified persons and also academic program instructors and program instructors of each program. The lists must be updated regularly for the benefit of keeping education standard and quality of the university.

#### No. 6 Qualifications and conditions of applicant to enroll as a student

6.1 Being graduated from a higher education institution with the following conditions

6.1.1 For graduate diploma program and master's degree program, the applicant must be graduated a bachelor's degree or equivalent.

6.1.2 For higher graduate diploma program, the applicant must be graduated

- (1) A 6 years bachelor's degree program, or
- (2) A master's degree or equivalent.

6.1.3 For doctoral degree program, the applicants must be graduated

- (1) A master's degree or equivalent, or
- (2) A bachelor's degree or equivalent with very good study record (GPA at least 3.50) or with good study record (GPA at least 3.00) under the conditions specified in the curriculum or with the approval of the graduate program executive committee and the graduate school.

6.2 Having never been terminated from any institution with the reason of behavior and conduct.

6.3 Not on a disease or under a condition that causes a barrier to the education.

6.4 Having any other qualifications specified by the university or in the program.

#### No. 7 Admission

Graduate School may admit an applicant by using selection or examination or any other methods, which will be occasionally announced in advance.

The applicant who passes the process of admission, but still waiting for education result as specified in no. 6, the university will accept as a full-time student when the applicant has accomplished all the qualifications within the specified period of time. *(Otherwise, a provisional student may be applied, as specified in no. 8.3)*

#### No. 8 Types of students

8.1 *Full-time Student* means a student who has accomplished all the qualifications specified in no. 6, and the university has accepted to be a full-time student.

8.2 *Attached Student* means a student who is accepted by the university to be eligible to enroll and study courses, or to use the university's facilities, or to do research work without the right to receive a degree or graduate diploma or higher graduate diploma from the university.

8.3 *Provisional Student* means a student who lacks of some admission qualifications or conditions, or applies in the middle of semester that the program committee has considered to accepted as a provisional student under some conditions without the right to receive a degree, graduate diploma or higher graduate diploma from the university, unless all the qualifications and conditions has been accomplished, then the status of provisional student will be transferred to a full-time student.



## No. 9 Student status report

Applicant who has accepted to enroll in a program, by the announcement of the university, must report him/her self for enrollment as a full-time student. All required documents must be submitted to the university by the date and time specified by the university, otherwise waiving the right to enroll shall be regarded.

## No. 10 Education System

### 10.1 The university employs the education systems as follows

10.1.1 Bi-semester system comprising 2 regular semesters in 1 year. Each regular semester has a period of study at least 15 weeks, and may have special session which is not a compulsory session by arranging study hours equivalent to the regular semester.

In case of necessity that the program needs to arrange education courses in special session or outside office hours for training, field trip, cooperative education, project or case study, the management of those courses shall not be regarded as a special session, but as a part of regular semester.

10.1.2 Yearly system comprising 40 weeks period of study. The starting, duration and finishing of education will be announced in the education calendar by the university.

In order to provide the students extra study or training in some courses, the graduate school may assign an additional “Special Session Duration” at the end of academic year, which is not a compulsory session. The duration and study hours shall follow the standard criteria, and shall be announced in each year for individual student or class without additional enrollment.

10.1.3 Modular system comprising teaching and learning in modules depending on the topics of education. The amount of teaching and learning hours and credits are equivalent to those of bi-semester system.

10.2 The university employs credit system, by arranging contents into courses and assigning numbers of credits equivalent to quantity of the contents. The number of credits is equivalent to that of bi-semester system, complying with the following criteria

10.2.1 A lecture or discussion course with at least 15 hours per semester is valued 1 credit.

10.2.2 An experimental or practical course with at least 30 hours per semester is valued 1 credit

10.2.3 A training or field trip course with at least 45 hours per semester is valued 1 credit

10.2.4 A study time spending for thesis with at least 45 hours per semester is valued 1 credit

10.3 The university may impose prerequisite for enrollment in some courses, in order to ensure that the students are able to learn efficiently. Enrollment of a course with wrong conditions shall be deemed void.

10.4 Each course shall be imposed with course title and course code.

10.5 Course code comprises field of subject code and course number.

10.6 Course number comprises a 3 digit number. The first digit (hundredths) represents level of the course as follows

“7” “8” “9” represent courses in graduate level.

“3” “4” “5” “6” represent courses in advanced undergraduate level.

“1” “2” represent courses in preliminary undergraduate level.

10.7 In case of closing a course, the academic sector in charge must check whether having some remaining student need to study the course, and the course number shall be hold for at least 4 years.

#### No. 11 Programs

The university may provide a program in multidisciplinary, cross-disciplinary, transdisciplinary, or broadband disciplinary by granting a degree or dual degree as follows

11.1 Standard of a program in graduate diploma, master's degree, higher graduate diploma and doctoral degree levels shall comply with the graduate level program standard criteria as announced by the ministry of education.

#### 11.2 Program structures

##### 11.2.1 Graduate diploma program

Graduate diploma program is for bachelor's degree graduates, which is complete in the program itself by not being a part of a program in master's degree level. The program emphasizes on developing academic personnel the skill in a specific field, in order to gain knowledge, expertise and be able to practice with higher skill. The program is composed of at least 24 credits.

In case of continuous enrollment in a higher level, the student may transfer the credits earned in graduate diploma to master's degree level in the same field or related area, but not more than 40 % of the program to study.

##### 11.2.2 Master's degree program

Master's degree program is for bachelor's degree graduates or equivalent and graduate diploma graduates, which emphasizes on developing academic or professional personnel the advanced knowledge and capability in the field of study through a research process, in order to freely exploit for new knowledge, based on morality and academic or professional codes of ethics. The program is composed of at least 36 credits.

Master's degree program is classified into 4 types, *i.e.*,

Type 1 emphasizes only on research by doing master's thesis for at least 36 credits.

Type 2 emphasizes on research by doing master's thesis of at least 12 credits and studying courses of at least 18 credits.

Type 3 emphasizes on coursework by studying courses of at least 24 credits and doing independent study of at least 6 credits.

Type 4 emphasizes only on coursework by studying only courses for at least 36 credits.

##### 11.2.3 Higher graduate diploma program

Higher graduate diploma program is for a 6-year bachelor's degree or master's degree graduates or equivalent, which is complete in the program itself, by not being a part of a program in doctoral degree level. The program emphasizes on developing academic or professional personnel the skill in the specific field, in order to gain knowledge, expertise and be able to practice with higher skill. The program is composed of at least 24 credits.

In case of continuous enrollment in a higher level, the student may transfer the credits earned in higher graduate diploma to doctoral degree level in the same field or related area, but not more than 40 % of the program to study.

#### 11.2.4 Doctoral degree program

Doctoral degree program is for a bachelor's degree graduate or equivalent with very good study record, or a master's degree graduate or equivalent with good study record. The program emphasizes on developing academic or professional personnel with high level of knowledge and capabilities in the field of study, through the process of research, in order to be able to exploit for new knowledge, based on morality and academic or professional codes of ethics.

Doctoral degree program is classified into 2 types emphasizing on academic or professional personnel development, *i.e.*,

Type 1 emphasizes on research by doing dissertation for creating new knowledge as details below

Type 1.1 is for master's degree graduates by doing dissertation only of at least 48 credits

Type 1.2 is for bachelor's degree graduates by doing dissertation only of at least 72 credits

Type 2 emphasizes on research by doing high quality dissertation for academic or professional progress together with coursework as details below

Type 2.1 is for master's degree graduate by doing a dissertation of at least 36 credits, and studying coursework in graduate level of at least 12 credits.

Type 2.2 is for bachelor's degree graduate by doing a dissertation of at least 48 credits, and studying coursework in graduate level of at least 24 credits.

#### 11.3 Programs are classified into 3 categories, *i.e.*,

11.3.1 Regular program means a program in a field of study that uses Thai language as the principal language in teaching and learning together with other language(s) as appropriate or necessary.

11.3.2 International program means a program in a field of study with the program structure that provides the opportunity to Thai and foreign students to study together by using a foreign language as the principal language in teaching and learning.

11.3.3 Bilingual program means a program that uses English language or any other foreign language(s) together with Thai language in teaching and learning.

#### 11.4 Study plan as specified in the curriculum of each program as follows

11.4.1 Graduate diploma or higher graduate diploma program, normal study duration is 1 year or equivalent, or as specified in the study plan of the program.

11.4.2 Master's degree program, normal study duration is 2 years or equivalent.

#### 11.4.3 Doctoral degree program

(1) For bachelor's degree graduate enrolling a doctoral degree program, normal study duration is 5 years or equivalent.

(2) For master's degree graduate enrolling a doctoral degree program, normal study duration is 3 years or equivalent.

11.5 Duration of study may be extended only in case of academic necessity or uncontrollable, under the following conditions

11.5.1 Graduate diploma program or higher graduate diploma program, a maximum of 3 years.

11.5.2 Master's degree program, a maximum of 5 years.

11.5.3 Doctoral degree program

(1) For a bachelor's degree graduate enrolling a doctoral degree program, a maximum of 8 years.

(2) For a master's degree graduate enrolling a doctoral degree program, a maximum of 6 years.

11.6 Doctoral degree students who are unable to finish the study within the duration specified in the program may apply for a master's degree in the same field of study, as the conditions to success specified in the program of study.

11.7 Any other special graduate education, *e.g.*, dual degree program, collaboration program between institutions, or programs in any type of disciplines may be made by submitting a proposal to the university to consider.

## No. 12 Enrollment

The university shall arrange registration process in each semester so that the students shall comply with the following processes

### 12.1 Coursework enrollment

12.1.1 For graduate diploma, higher graduate diploma and master's degree levels, a general advisor shall be assigned to each student for recommending, advising and guiding the study to comply with the education plan.

12.1.2 For doctoral degree level, a dissertation advisory committee shall be assigned to each student for planning, recommending, controlling the study and doing dissertation.

12.1.3 Coursework enrollment shall be done complying with the announcement of the university. If coursework enrollment is later than the specified date, the student shall be fined with the amount specified in the university regulation on tuition fee.

Enrollment is complete after the tuition and any other fees have been paid and the university has received all required documents.

12.1.4 The course that has been granted at least grade B shall not be able to reenroll. The enrollment failing to this condition shall be deemed void, except some specified courses that are allowed to reenroll.

12.1.5 Courses enrollment in a regular semester shall not be more than 15 credits. Courses enrollment in a special session shall not be more than 6 credits.

In case of expecting graduation in a regular semester the student may enroll more than 15 credits, or in a special session the student may enroll more than 6 credits, with the approval of the dean that the student is affiliated to.

12.1.6 Any enrollment that fails to the conditions shall be deemed void. The enrolled courses that fail to the conditions shall be granted study status letter W.

12.1.7 Student may enroll some course as a visitor for gaining knowledge by receiving study status letter V.

If a student enrolling a course as a visitor, to receive study status with letter V, wishes to change the condition to measure and evaluate the result of study to be a grade, or letter S or U, it has to comply with the condition announced by the university.

12.2 Thesis enrollment shall comply with the announcement of the Graduate School.

12.3 A student enrolling for using facilities of the university without studying any coursework must pay the enrollment fee as announced by the university.

12.4 An enrollment as an attached student or a provisional student shall comply with the announcement of the graduate school.

No. 13 Adding and withdrawing course(s) shall comply with the announcement of the university.

#### No. 14 Educational measurement and evaluation

14.1 Study evaluation shall be done at the end of each unit of teaching and learning, semester, or academic year, as the case may be.

14.2 Study evaluation for each course shall be reported by a letter which is classified into 3 groups, *i.e.*, study grade with a numerical value, study result, and study status that has not been evaluated or without evaluation.

#### 14.3 Study evaluations, meanings and grade values

##### 14.3.1 Study grades are defined as follows

Grade Letter	Meaning	Value
A	excellent	4.00
B+	very good	3.50
B	good	3.00
C+	fairy good	2.50
C	fair	2.00
D+	poor	1.50
D	very poor	1.00
F	failed	0.00

##### 14.3.2 Study results are defined as follows

Result Letter	Meaning
S	satisfactory
U	unsatisfactory

14.3.3 Study status for course without evaluation or having not yet been evaluated are defined as follows

Status Letter	Meaning
I	incomplete
P	in progress
V	visiting
W	withdrawn
T	thesis in progress

14.4 Study status letter I means the course has been evaluated incomplete with an uncontrollable cause, so that the evaluation cannot be done. Study status letter I must be approved by the graduate education executive committee chair that the program is affiliated to.

The student receiving study status letter I must apply for study evaluation within 2 weeks before the end of next regular semester, otherwise study grade F or study result U shall be granted, as the case may be.

14.5 Study status letter P means the course is in progress by having not yet been measured and evaluation in the enrolling semester. Study status letter P must be granted only for the course(s) that is specified in the program.

Study status letter P shall be changed after measurement and evaluation has been done within the last date of final examination of next 2 regular semesters, otherwise study grade F or study result U shall be granted, as the case may be.

14.6 Study status letter T means thesis has not been evaluated, which is on going in the process of doing research.

14.7 Study status letter V means the student has enrolled the course as a visitor without measurement and evaluation. The student must attend at least 80% of the total course hours and follow the conditions of the course, otherwise study status letter V will be changed to W.

14.8 Study status letter W is applied for

14.8.1 The enrollment with wrong condition(s) and being deemed void as specified in no. 12.1.4 and 12.1.6.

14.8.2 The enrollment fails to comply with the conditions specified in 12.1.5.

14.8.3 The study fails to comply with the condition specified in 14.7.

14.8.4 The student has been suspended from study in that semester.

14.8.5 The student has withdrawn the course under the condition(s) specified.

14.8.6 Thesis proposal has not been approved by the academic program committee in the first semester that the student has enrolled the thesis course.

14.8.7 In case of uncontrollable, resignation, dead or the university has approved to withdraw every course that has enrolled.

14.9 Students must be granted at least grade C in every required course, otherwise a reenrollment must be done until at least study grade C is granted.

In case of study result of required course is evaluated in S or U, if the student has granted a study result U, a reenrollment must be done until study result S is granted.

14.10 In case of graduate student enrolls some course(s) in bachelor's degree level, the enrollment, adding, withdrawing, measuring and evaluation for that course(s) must follow the rules and regulations for undergraduate education.

Prerequisite required for enrolling undergraduate courses may be exempted under the consideration of the course instructor.

14.11 Study result and status letters S, U, I, P, T, V and W shall be excluded from grade point average (GPA) calculation.

14.12 Accumulated credits calculation

14.12.1 Accumulated credits for granting graduation as specified in the curriculum are calculated only from courses with study grade A, B+, B, C+, C or study result S.

14.12.2 In case the student enrolls a course more than once, the accumulated credits shall be calculated from only the last enrollment, except the course that the university allows to reenroll with multiple credits earned.

Accumulated credits shall not include courses in preliminary undergraduate level.

14.12.3 In case the students enroll courses that are equivalent, accumulated credits shall be calculated only from one of the courses.

14.13 Grade point average calculation shall include all credits and grades of courses that have enrolled, including reenrolled course(s), except the course(s) that receives study result and study status as specified in no. 14.11, preliminary undergraduate course(s), and program with thesis only.

14.14 Grade point average shall be calculated from sum of product of course credits and grade value of each course, as specified in no. 14.13, then divided by sum of all course credits that measured and evaluated with grade, excluding courses that measured and evaluated with study result as specified in no. 14.11. The quotient from the calculation shall have only 2 decimal points. In case of the third digit after the decimal point valued 5 or more, the second digit shall be rounded up.

14.15 In case the student enrolls a course in a program, the course may be transferred to other programs with the approval of the graduate education executive committee chair of academic sector that accepts the student or credits transfer then inform the graduate school to acknowledge.

14.16 In case of having an appeal or evidence that the evaluation result is incorrect, not followed the criteria or inappropriate, the president may appoint a committee to investigate for the fact, then consider and make an appropriate order to the case.

No. 15 Change of study plan and field of study must comply with that specified by the graduate school.

No. 16 Transferring students and credits must comply with that specified by the graduate school.

No. 17 Education standard control must comply with that specified by the university.

No. 18 General advisors and thesis major advisors

#### 18.1 General advisors

Each student in graduate diploma, higher graduate diploma and master's degree level shall be assigned a general advisor to advice and take care of study plan for the student, in order to comply with that specified in the program, regulations and any other necessary and appropriate matters.

#### 18.2 Thesis major advisors

18.2.1 For master's degree student, a thesis major advisor shall be assigned for guiding and taking care of doing master's thesis.

Thesis advisor may be in the form of advisory committee comprising at least 2 thesis advisors, one is the thesis major advisor. *(The rest is thesis co-advisor)*

18.2.2 For doctoral degree student, a dissertation advisory committee shall be assigned for guiding, planning, and taking care of doing dissertation. The dissertation advisory committee comprises at least 3 dissertation advisors, where one is the dissertation major advisor. *(The rest is dissertation co-advisor)*

General advisor and thesis major advisor may be a graduate school instructor or specialist instructor who is qualified as specified in no. 20.

Appointment of general advisors and thesis major advisors shall be done by the graduate education executive committee chair of the academic sector in charge.

No. 19 Course instructor and thesis co-advisor may be a graduate instructor or special instructor.

Appointment of course lectures and thesis co-advisor shall be done by the graduate education executive committee chair of the sector in charge.

No. 20 Number and qualifications of instructors

#### 20.1 Graduate diploma program

### 20.1.1 Program instructor

- (1) Having at least a master's degree or equivalent qualification.
- (2) Having at least 3 academic works within past 5 years, where at least 1 is research work.
- (3) For professional graduate diploma program, program instructor must comply with qualifying criteria of that profession.

### 20.1.2 At least 5 academic program instructors

- (1) Having qualification of doctoral degree or equivalent , or at least a master's degree or equivalent with academic position of associate professor.
- (2) Having at least 3 academic works within past 5 years, where at least 1 is research work.

### 20.1.3 General advisor, course instructor and special instructor

- (1) Having at least a master's degree or equivalent qualification in specific field or related area to the program or the course taught.
- (2) Having teaching experience.
- (3) Having at least 1 academic work within past 5 years.

In case of special instructor, master's degree qualification may be exempted with at least bachelor's degree or equivalent and at least 6 years experience in the area related to the course taught.

## 20.2 Higher graduate diploma

### 20.2.1 Program instructor

- (1) Having qualification of doctoral degree or equivalent, or at least master's degree or equivalent with academic position of associate professor.
- (2) Having at least 3 academic works within past 5 years, where at least 1 is research work.
- (3) For professional higher graduate diploma program, program instructor must comply with qualifying criteria of that profession.

### 20.2.2 At least 5 academic program instructors

- (1) Having qualification of doctoral degree or equivalent, or at least master's degree or equivalent with academic position of professor.
- (2) Having at least 3 academic works within past 5 years, where at least 1 is research work.

### 20.2.3 General advisor, course instructor and special instructor

- (1) Having qualification of doctoral degree or equivalent, or at least master's degree or equivalent with academic position of associate professor in the field or related area to the program or the course taught.
- (2) Having teaching experience.
- (3) Having at least 1 academic work within past 5 years.

## 20.3 Master's degree program

### 20.3.1 Program instructor

- (1) Having a qualification of at least master's degree or equivalent.
- (2) Having at least 3 academic works within past 5 years, where at least 1 is research work.



### 20.3.2 At least 3 academic program instructors

(1) Having qualification of doctoral degree or equivalent, or at least master's degree or equivalent with academic position of associate professor.

(2) Having at least 3 academic works within past 5 years, where at least 1 is research work.

20.3.3 Thesis advisor must be a program instructor, which is classified into 2 categories, *i.e.*,

(1) Thesis major advisor must be a program instructor with doctoral degree or equivalent, or at least master's degree or equivalent with the position of associate professor, together with at least 3 academic works within past 5 years, where at least 1 is research work.

(2) Thesis co-advisor (if any) must have qualifications as follows

In case of graduate instructor, qualifications must be same as thesis major advisor.

In case of external qualified person, a qualification of doctoral degree or equivalent with at least 10 academic publications in acceptable national database in the same field or related area to master's thesis or I.S.

In case of external qualified person being not qualified with the specified qualifications, an expert with acceptable high level of knowledge and experience in the field or related area to the thesis may be approved by the university council, then inform the commission of higher education to acknowledge.

20.3.4 At least 3 thesis examiners comprise program instructor(s) and external qualified person. Thesis examiner chair must not be thesis major advisor or co-advisor. Thesis examiners are classified into 2 categories, *i.e.*,

(1) In case of program instructor, qualifications are same as chair of thesis major advisor.

(2) In case of external qualified person, qualifications, or in special case, are same as thesis co-advisor.

### 20.3.5 General advisors, course instructors and special instructors

(1) Having qualification of master's degree or equivalent in that field or related area to the program or the course taught.

(2) Having teaching experience.

(3) Having at least 1 academic work within past 5 years.

## 20.4 Doctoral degree program

### 20.4.1 Program instructor

(1) Having qualification of doctoral degree or equivalent, or master's degree or equivalent with academic position of associate professor.

(2) Having at least 3 academic works within past 5 years, where at least 1 is research work.

### 20.4.2 At least 3 academic program instructors

(1) Having qualification of doctoral degree or equivalent, or at least master's degree or equivalent with academic position of professor.

(2) Having at least 3 academic works within past 5 years, where at least 1 is research work.

20.4.3 Dissertation major advisor must be a program instructor, which is classified into 2 categories, *i.e.*,

(1) Thesis major advisor must be a program instructor with following qualifications

(1.1) Having English proficiency at the level specified by the graduate school.

(1.2) Having qualification of doctoral degree or equivalent, or at least master's degree or equivalent with academic position of professor.

(1.3) Having at least 3 academic works within past 5 years, where at least 1 is research work.

(2) Dissertation co-advisor must have qualifications as follows

In case of graduate instructor, qualifications are same as dissertation major advisor.

In case of external qualified person, a qualification of doctoral degree or equivalent with at least 5 academic publications in acceptable international database in the same field or related area to the dissertation.

In case of external qualified person having not been qualified with the specified qualifications, an expert with acceptable high level of knowledge and experienced in the field or related area to the thesis may be permitted by the approval of the university council and informing the commission of higher education to acknowledge.

20.4.4 At least 5 dissertation examiners comprise program instructor(s) and external qualified person. Thesis examiner chair must be an external qualified person, which is classified into 2 categories, *i.e.*,

(1) In case of program instructor, qualifications and academic works are same as dissertation major advisor.

(2) In case of external qualified person, qualifications and academic works are same as dissertation co-advisor.

20.4.5 General advisors, course instructors and special instructors

(1) Having qualification of doctoral degree or equivalent, or at least master's degree or equivalent with academic position in the specific field or related area to the program or the course taught.

(2) Having teaching experience.

(3) Having at least 1 academic work within past 5 years.

In case of the course taught is not in the same field of the program, at least master's degree or equivalent qualification with academic position of associate professor may be permitted to be course instructor.

In case of extreme necessity, especially in the field that shorts of program instructors or number of students is less than 10, the case together with number and qualifications of program instructors must be proposed to the commission of higher education to consider.

No. 21 Duty and workload must comply with the announcement of the university.

No. 22 Foreign language conditions, as a study tool for doing thesis, must comply with the criteria and process specified by the graduate school.

No. 23 Qualifying examination is to evaluate readiness and capability of doctoral students, in order to receive the right to enroll dissertation with following conditions

23.1 The student must apply for qualification examination with the approval of dissertation major advisor before submitting the application form to the graduate school.

23.2 Qualifying examination committee comprising at least 3 qualifying examiners chaired by the dissertation major advisor must be appointed by graduate education executive committee chair of the academic sector in charge. One of the qualifying examiners must be in the same or nearby field of the dissertation and must not be a dissertation co-advisor.

23.3 When qualifying examination has already been done, the examiner chair must report the result of examination to the graduate school within 1 week after to the examination.

The student who fails qualifying examination shall receive one more right to take a qualifying reexamination by submitting a request form within next regular semester from the first qualification examination.

In case the student fails qualifying reexamination, the student may request to transfer to a master's degree program in the same or related field endorsed by the graduate program executive committee to the graduate school to approve.

No. 24 Comprehensive examination is to test general knowledge, concepts and content integration capability, and knowledge application capability in problem solving. The student must have enrolled all courses specified in the curriculum and pass all required courses with at least grade C.

24.1 Comprehensive examination is compulsory for type 3 and type 4 master's degree programs. In case of type 1 and type 2 master's degree and doctoral degree programs are as specified in each curriculum.

#### 24.2 Comprehensive examination process

24.2.1 The student must apply for comprehensive examination, to the graduate school, endorsed by general advisor or thesis major advisor.

24.2.2 Comprehensive examination committee comprising at least 3 comprehensive examiners from full-time graduate school instructors must be appointed by graduate education executive committee chair of the academic sector in charge.

24.2.3 When the comprehensive examination has already been done, the examination chair must report the result of examination to the graduate school within 1 week after the examination.

The student who fails comprehensive examination shall receive one more right to take a comprehensive reexamination by submitting a request for comprehensive reexamination. *(to the graduate school endorsed by general advisor or thesis major advisor)*

No. 25 Operating procedures and steps in doing thesis shall comply with that specified by the graduate school.

Intellectual properties generated from doing thesis shall be managed by complying with the university rules and regulations concerning intellectual properties management with mutual agreement in writing.

No. 26 Student status termination may be caused by the following cases

26.1 Dead

26.2 Resignation

26.3 Transfer to other university

26.4 Lack of one of qualifications or conditions of applicant to enroll as a student as specified in no. 6

26.5 Having not enrolled any course within the time specified by the university without maintaining the student status within 30 days from first date of regular semester.

26.6 Having rerolled a program for a maximum duration specified in no. 11.4 from the first date of first regular semester of enrollment.

26.7 Study result with grade point average of less than 2.75 when having enrolled every 2 regular semesters.

26.8 A doctoral student who fails qualifying examination without having the approval to transfer to a master's degree program, as specified in no. 23.

26.9 Thesis title and proposal has not been approved after enrollment for a period of time as specified below

26.9.1 For every type of master's degree program, 2 academic years.

26.9.2 For every type of doctoral degree program, 3 academic years.

26.10 Having enrolled for 2 regular semesters without any credit earned, except the program with thesis only.

26.11 Having failed comprehensive examination as specified in no. 24.

26.12 Having not paid tuition fee within the time specified by the university.

26.13 Having been graduated.

26.14 Having been terminated by the university.

#### No. 27 Taking leave

27.1 Student taking leave or having been suspended a semester or whole academic year must pay the fee for maintaining student status, except the semester that have enrolled with the tuition fee paid.

27.2 Student wishing to resign from student status may request for a resignation to the graduate school. When the resignation has been approved the student status is terminated.

#### No. 28 Reenrollment

28.1 Student who has already graduated or has been terminated by the regulation no. 26.2, 26.6, 26.7, 26.8, 26.9 and 26.11, and has been admitted as a student again, is able to transfer the courses and credits earned within past 5 years from the date of course enrollment.

28.2 Graduate student who wishes to resume student status after student status has been terminated by the regulation no. 26.2, 26.3, 26.5 and 26.12 may request for resuming student status to the graduate school, in order to propose to the university to consider, as the individual case may be.

28.3 Student who has been terminated by the university with the reason of dishonest, misbehave, acting against morality, codes of ethics or law is not eligible to reenroll in the university.

#### No. 29 Nomination for graduation a degree or diploma

At the final semester that the student is going to fulfill all courses and conditions specified in the curriculum, the student must report him/her self to the registration office for graduation expectation, endorsed by general advisor or thesis major advisor, then also report to the affiliated academic sector.

Student who is nominated for graduation a degree or diploma must fulfill all the following conditions

29.1 Having studied courses and fulfilled all the conditions specified in the curriculum.

29.2 Having received grade point average of all courses at least 3.00 and grade point average of courses in specific field at least 3.00, except program with dissertation or master's thesis only.

29.3 Having passed a foreign language conditions by examination or any other methods specified by the graduate school.

29.4 Having passed comprehensive examination, for type 3 and type 4 master's student and for the program that has specified.

29.5 Having passed thesis evaluation examination.

The dissertation (*doctoral thesis*) must be composed in English language or any other language approved by the graduate school, as the individual case may be.

29.6 Thesis result must be published or at least accepted to publish in a journal, media, printed matter, or registered a petty patent or patent, or in other forms accepted by the field of study with the approval of the graduate school for each level and/or type of study.

29.7 Having qualifications complying with the university regulation on student's honor and glory determination to graduate a degree or diploma of the university.

29.8 Being honest and faithful with morality and ethics, by righteously and legally creation of work based on facts without any biasing, making up or false data, violating rights, stealing, copying, imitating or repeating (plagiarizing) works of the others.

#### No. 30 Appealing

When the university has considered and made an order or decision in any case concerning to this regulation, if the student does not agree with the order or decision of the university, the student has the right to make an appeal to the president within 30 days from the date of acknowledgement of the order or decision as the case may be. The order or decision of the president is regarded as the final decision.

No. 31 The president must act in accordance with this regulation and has the authority to make announcements or rules complying with this regulation. In case of having problem in operation complying with this regulation, the president has the authority to consider, interpret and make final decision and/or make an appropriate order and operation, then inform the university council to acknowledge.

Announced on 25th August 2559 B.E.

(signed)

(Emeritus Professor Kasem Wattanachai, M.D.)

Chairman of Chiang Mai University Council

***Note: In case of going to court or having problem in interpreting this translation, it must follow the essence of the regulation in Thai language.***

**(Translation)**  
**Chiang Mai University Regulations**  
**on Graduate Education**  
**(Issue No. 2)**  
**2561 B.E.**

---

By the virtue of section 25 (3), 64 and 66 of Chiang Mai University Act 2551 B.E. and the resolution of Chiang Mai University Council meeting no. 3/2561 on 24<sup>th</sup> March 2561 B.E., Chiang Mai University Regulations on Graduate Education are amended as follows:

No. 1 These regulations are referred to as “Chiang Mai University Regulations on Graduate Education (Issue No. 2) 2561 B.E.”

No. 2 These regulations are effective for graduate students who study in a Graduate Diploma, Master’s Degree, Higher Graduate Diploma or Doctoral Degree Program offered by Chiang Mai University from the academic year 2561 (2018) on.

No. 3 A definition of “Duration of Study” is appended next after the “Foreign Language” in No. 4 of Chiang Mai University Regulations 2559 B.E. as follows:

““Duration of Study” means total duration of study starting from the first date of the first semester of enrollment including coursework study, doing research, academic work creation, doing thesis, thesis work publication throughout the process to perform the criteria and conditions specified in the curriculum until the date of nomination for a diploma or a degree to be awarded.”

No. 4 The statements in No. 11.5 of Chiang Mai University Regulations on Graduate Education 2559 B.E. are abolished and replaced by the following statements:

“11.5 The student who is not able to finish his/her study within the duration of study specified in No. 11.4 is able to continue his/her study under the following criteria:

11.5.1 For Graduate Diploma and Higher Graduate Diploma, not more than 3 academic years.

11.5.2 For Master’s Degree, not more than 5 academic years.

11.5.3 For Doctoral Degree,

(1) a Bachelor’s Degree holder, not more than 8 academic years,

(2) a Master’s Degree holder, not more than 6 academic years.”

No. 5 The statement in No. 26.6 of Chiang Mai University Regulations on Graduate Education 2559 B.E. are abolished and replaced by the following statements:

“26.6 Having enrolled a program for a maximum duration specified in No. 11.5 starting from the first date of the first semester of enrollment.”

No. 6 In the case of force majeure that a student is unable to finish his/her study within the duration specified in No. 11.5, the student may request for a reasonable period of extension with the opinion of his/her thesis advisor through the Graduate Program Executive Committee (GPEC), Graduate Education Executive Committee (GEEC) of Academic Sector, Graduate School Executive Committee (GSEC) then to the president to consider and make decision as the final result.

Announced on 26<sup>th</sup> May 2561 B.E.

(Signed)

(Emeritus Professor Kasem Wattanachai)  
Chairman of Chiang Mai University Council

***Note: This document has been translated from the Thai Language. In case of court proceedings, or any other disagreement between this document and the original document, the Thai Language version of this document shall take precedence.***

**(Translation)**  
**Announcement of Graduate School, Chiang Mai University**  
**No. 22/2564**  
**Subject: Foreign Language Conditions for Graduate Students**

In order to make foreign language conditions for graduate student complying with the quality and standard, following the same steps and procedures, by the virtue of clause no. 22 of Chiang Mai University Regulations on Graduate Education 2559 B.E., conditions for foreign language used as a tool for graduate study and thesis work must follow the criteria and method specified by the Graduate School. Along with the agreement of the Graduate School Academic Administrative Committee (GSAAC), meeting no. 8/2564 on 11<sup>th</sup> June 2021, the foreign language conditions for graduate students are set as follows:

1. The announcement of the Graduate School, Chiang Mai University No. 20/2564, Subject : Foreign Language Conditions for Graduate Students, signed on 4<sup>th</sup> June, 2021 is nullified and these procedures be used instead.

2. This announcement is effective for graduate students enrolling from the academic year 2021 (student code 64...) on. The graduate students enrolling before the academic year 2021 (student code 63...) may use the criteria specified in this announcement, as an individual case may be.

3. English Language is specified as a foreign language for passing the foreign language conditions. The criteria for passing the foreign language conditions must be certified by the language institutes accepted by the graduate school, as shown in the following table

<b>Institute</b>	<b>English score for enrolling a doctoral degree student</b>	<b>Score for thesis proposal submission/graduation for master's degree</b>	<b>Score for thesis proposal submission/graduation for all international and doctoral programs</b>
CMU-eTEGS	45	60	65
IELTS	4.0	5.0	5.5
TOEFL	ITP: 430 CBT: 117 IBT: 39	ITP: 450 CBT: 133 IBT: 45	ITP: 523 CBT: 193 IBT: 69
TOEIC	-	650*	-
CU-TEP **	45%	60%	65%
TU-GET/ TU-GET(CBT)**	45%	60%	65%
KU-EPT **	45%	60%	65%
DynEd	0.5 (CEFR = A1)	2.5 (CEFR = B2)	3.0 (CEFR = C1)
CMU e-Grad**	50%	70%	90%

**Note:** as mentioned in the attached documents

\* programs approved by the Graduate School Academic Administration Committee (GSAAC)

\*\* the score must be not less than the specified percentage from the total score



In case the students under Academic Collaboration Program, including Dual Degree Program, (i.e., Double Degree Program, Joint Degree Program or Second Degree Program) or any other programs, foreign language conditions or operating procedure must be specified under the agreement of Graduate Program Administrative Committee, Academic Sector Graduate Education Executive Committee, and approved by the graduate school, before recruiting the students or before thesis proposal submission.

Students in master's degree program type 3 must pass the foreign language conditions before requesting for thesis (independent study) examination.

Students in all doctoral degree program and master's degree program type 1 and type 2 must pass the foreign language conditions before thesis (dissertation/master's thesis) proposal submission. Otherwise, thesis title and proposal, and thesis registration will be deemed void.

Master's degree holders who immediately continue for a doctoral degree program is able to use the foreign language test result received in the master's degree to the doctoral degree program, except TOEIC test result is not applicable for doctoral degree program.

Applicant for all doctoral degree programs is required a foreign language test result as specified in the table above. Otherwise, a provisional student may be applied first, until all requirements are achieved.

4. Foreign language scores must not be later than 2 years at the date submitted to the Graduate School. The score can be used in all related activities until graduation.

5. Students who receive CMU-eTEGS English test result below the required score may choose to take English Language Preparation for Academic Skills (General English) course (composed of vocabulary, grammar, and reading), or English Language Preparation for Academic Skills (Vocabulary and usage) course (composed of vocabulary and grammar), or Intensive Integrated English for Graduate Students course (composed of grammar, reading, writing and presentation) by the HAS Center (Humanities Academic Service Center), Chiang Mai University, and attend not less than 80% of the class time and pass the proficiency or skill development test. Students who are eligible to take the course must have the CMU-eTEGS score as follows:

### All Master Degree Programs (Regular Program)

Institute	Score	Course
<b>English course for developing English skill to comparable 40 score, which could take Intensive Integrated English for Graduate Students Course (60 hours)</b>		
CMU-eTEGS	30 – 34	English Language Preparation for Academic Skills (General English) <b>Total 30 hours</b> . A student needs to attend not less than 80% of the class time and pass 55% of the total score.
	35 – 39	English Language Preparation for Academic Skills (Vocabulary and Usage) <b>Total 15 hours</b> . A student needs to attend not less than 80% of the class time and pass 55% of the total score.
<b>English course for developing English skill to comparable 60 score</b>		
CMU-eTEGS	40 - 59	Intensive Integrated English for Graduate Students <b>Total 60 hours</b> A student needs to attend not less than 80% of the class time and pass the total score of the proficiency or skill development test.

### All Doctoral Degree and International Programs

Institute	Score	Course
<b>English course for developing English skill to comparable 45 score, which could take Intensive Integrated English for Graduate Students Course (60 hours)</b>		
CMU-eTEGS	35 – 40	English Language Preparation for Academic Skills (General English) <b>Total 30 hours</b> . A student needs to attend not less than 80% of the class time and pass 60% of the total score.
	41 – 44	English Language Preparation for Academic Skills (Vocabulary and Usage) <b>Total 15 hours</b> . A student needs to attend not less than 80% of the class time and pass 60% of the total score.
<b>English course for developing English skill to comparable 65 score</b>		
CMU-eTEGS	45 - 64	Intensive Integrated English for Graduate Students <b>Total 60 hours</b> A student needs to attend not less than 80% of the class time and pass the total score of the proficiency or skill development test.

All courses can be applied at HAS Center and online channels from 14<sup>th</sup> June 2021 on. English Language Preparation for Academic Skills (General English) 30 hours and English Language Preparation for Academic Skills (Vocabulary and Usage) 15 hours will be started from 5<sup>th</sup> July 2021.

6. Foreign students who are Native English Speaker, as specified in the attached document, are regarded as pass the foreign language conditions. Foreign students who study in the program taught in English and do thesis about Thailand, may use an equivalent Thai language test result as pass the foreign language conditions

7. In case of using other foreign languages which is not English, or any other special cases, reasons and necessity must be proposed, considered, agreed and approved by the Graduate Program Administrative Committee (GPAC), Academic Sector Graduate Education Executive Committee (GEEC) and Graduate School Academic Administrative Committee (GSAAC).

Announced on 15<sup>th</sup> June 2021

(Signed)

(Associate Professor Dr. Apichat Sopadang)  
Dean of Graduate School

## Attachment

Programs approved by the Graduate School Academic Administrative Committee (GSAAC) to submit TOEIC score includes master degree programs (regular program) as follows: (Meeting no. 8/2564 on 11<sup>th</sup> June 2021)

- |  |                                    |
|--|------------------------------------|
| - Master of Arts Program in Visual Arts                                    | Faculty of Fine Arts               |
| - Master of Science Program in Industrial Engineering                      | Faculty of Engineering             |
| - All programs   | Faculty of Business Administration |
| - Master of Science Program in Technology and Interdisciplinary Management | Graduate School                    |

\*\* The score as announced by the institute must be not less than the specified percentage from the total score

\*\*\* The UK government classifies the following overseas countries as majority native English speaking:

Antigua and Barbuda	Australia	The Bahamas	Barbados
Belize	Canada	Dominica	Grenada
Guyana	Ireland	Jamaica	New Zealand
St Kitts and Nevis	St Lucia	St Vincent and the Grenadines	
Trinidad and Tobago	United Kingdom		
United States of America			

# English course for developing English skill

## **Course: English Language Preparation for Academic Skills (General English) 30 hours**

For Master Degree Students (Regular Program)

Score 30-34

For Doctoral Degree Students and International Programs

Score 35-40

A 30-hours course composed of 7.5 hours of vocabulary, 9 hours of grammar, and 13.5 hours of reading

Test approximately 3 times

Registration fee 3,500 baht

## **Course: English Language Preparation for Academic Skills (Vocabulary and Usage) 15 hours**

For Master Degree Students (Regular Program)

Score 35-39

For Doctoral Degree Students and International Programs

Score 41-44

A 15-hours course composed of 7 hours of vocabulary and 8 hours of grammar

Test approximately 2 times

Registration fee 2,500 baht

## **Requirements**

Attend not less than 80% of the class time

Pass the test as following;

Master Degree Programs (Regular Program)

pass 55% of the total score

Master and Doctoral Degree Programs (International Program)

pass 60% of the total score

Test approximately 2-3 times

## **Application**

Applied at HAS Center and online channels from 14<sup>th</sup> June 2021 on

<https://www.facebook.com/hascenter.chiangmaiuniversity/>

## **Course**

Started from 5<sup>th</sup> July 2021 (Online)

English Language Preparation for Academic Skills (General English) 30 hours

English Language Preparation for Academic Skills (Vocabulary and Usage) 15 hours

(Translation)

**Announcement of the Graduate School, Chiang Mai University No. 15/2565**

**Subject: Criteria and Operating Procedure for Thesis Publication**

-----

According to the Regulation of Chiang Mai University on Graduate Education 2559 B.E., clause no. 29.6: a thesis work must be published or at least accepted to publish in a journal, media, printed matter, registered a petty patent or patent, or other ways of publication that are accepted in the field of study as specified by the graduate school, on each level and/or type of study, along with the agreement of the Academic Council Board meeting no. 4/2565 on 20<sup>th</sup> April 2022 and the Graduate School Academic Administrative Committee (GSAAC), meeting no. 5/2565 on 8<sup>th</sup> April 2022, the Criteria and Operating Procedure for Thesis Publication are issued as follows.

1. Announcement of Graduate School, Chiang Mai University, Subject: Criteria and Operating Procedure for Thesis Publication No. 37/2559 issued on 9<sup>th</sup> November 2016, No. 45/2560 (No.2) issued on 10<sup>th</sup> November 2017, and No. 63/2561 (No.3) issued on 24<sup>th</sup> October 2018 are cancelled.

2. This announcement is valid for the students who request for the graduation on the announced date.

3. Criteria for thesis publication

3.1. Graduate Diploma or High Graduate Diploma: Criteria for thesis publication is as specified in each program.

3.2. Master's degree

<b>Criteria for thesis publication</b>	<b>Type 1</b>	<b>Type 2</b>	<b>Type 3</b>
<b>Publications</b> The thesis or parts of the thesis have been published or at least accepted to be published in international journals <u>or</u> national journals in TCI Tier 1 <u>or</u> national journals which are qualified and accepted in the field of study or related fields. The journals must regularly and continuously publish for at least 3 years. The quality of publications must be evaluated by at least 3 peer reviewers from various outside university. The journal can be published in both print and electronic, which have an exact schedule. <u>or</u> published as a full paper in the proceeding of international conference, which was accepted in the field of study.	1	1	

<b>Criteria for thesis publication</b>	<b>Type 1</b>	<b>Type 2</b>	<b>Type 3</b>
<b>National conference</b> <b>Note:</b> Award from national contest of National Research Council of Thailand (NRCT) or equivalent award can be used instead of the presentation in national conference after the acceptance from the Graduate School Academic Administrative Committee (GSAAC).	1		
<b>Independent study</b> Independent study or parts of the independent study must be published in the academic publications, which are accepted by the program and the <u>Graduate School Academic Administrative Committee (GSAAC)</u> .			1
<b>Patent/Innovation, which can be used instead of 1 publication</b>			
<b>Patent:</b> Request number + Readiness level (TRL/PRL/SRL 4 and above)			
<b>Innovation:</b> Readiness level (TRL/PRL/SRL 5 and above)			

In the case of fine arts, visual arts, or media arts, apart from the above criteria for thesis publication, the thesis can be publicly published in the form or method that is accepted in the field of study by focusing on thinking, analyzing, creating, and applying. The arts, approved by the national artists or experts, who is accepted by the Graduate School, can be used instead of the publications or presentation in the National conference.

### 3.3. Doctoral degree

<b>Criteria for thesis publication</b>	<b>Type 1.1</b>	<b>Type 1.2</b>	<b>Type 2.1</b>	<b>Type 2.2*</b>
<b>Publications</b>				
The Ph.D. thesis or parts of the Ph.D. thesis have been published or at least accepted to be published in international journals in ISI, Scopus, IEEE, PubMed, or Web of Science	1	1	1	1
The Ph.D. thesis or parts of the Ph.D. thesis have been published or at least accepted to be published in international journals.	1			1
<b>International conference</b> <b>Note:</b> Award from international contest can be used instead of the presentation in international conference after the acceptance from the Graduate School Academic Administrative Committee (GSAAC).	1	1	1	1

<b>Criteria for thesis publication</b>	<b>Type 1.1</b>	<b>Type 1.2</b>	<b>Type 2.1</b>	<b>Type 2.2*</b>
<b>Patent/Innovation, which can be used instead of 1 publication</b>				
<b>Patent:</b> Request number + Readiness level (TRL/PRL/SRL 6 and above)				
<b>Innovation:</b> Readiness level (TRL/PRL/SRL 7 and above)				

**Note:** \*Type 2.2 Only 1 international publication in ISI Q1/Q2 can be used instead of 2 international publications.

In the case of fine arts, visual arts, or media arts, apart from the above criteria for thesis publication, the Ph.D. thesis can be publicly published in the form or method that is accepted in the field of study, which is not below the criteria set by the Ministry of Education and/or Ministry of Higher Education, Science, Research and Innovation, by focusing on creating, new knowledge, or academic/professional innovative new ideas. The arts, approved by the international artists or experts, who is accepted by the Graduate School, can be used instead of the publications or presentation in the National conference.

In addition, the Ph.D. thesis can be published in national journals in TCI Tier 1 or the national journals which are qualified and accepted in the field of study or related fields, regularly and continuously published for at least 3 years, and the quality of publications must be evaluated by at least 3 peer reviewers from various outside universities, and published in both print and electronic, which have an exact schedule or presented in the academic regarding the program's conditions.

3.4. For at least 1 thesis publication, the student must be listed as the first author. The affiliation of the student in the major publication must be as follows: "Program...../ Department..... Faculty/College/School of..... Chiang Mai University".

3.5. The thesis must not be published in the journals, which are in the List of Predatory Publishers.

3.6. International publication/conference can be used instead of the national.

3.7. The verification of database entries is based on the submission date.

4. In the case that it is imperative that the above criteria are not met, reasons and necessity must be proposed, considered, agreed and approved by the Graduate Program Administrative Committee (GPAC), Academic Sector Graduate Education Executive Committee (GEEC), and Graduate School Academic Administrative Committee (GSAAC). The consideration of GSAAC shall be final.



5. The program can set higher quantity and quality of the criteria than this announcement.

In case of not following the above criteria, the program can set the form, method, level, and number of publications, which are accepted in the field of study in the program. However, the criteria must not lower than those set by the Ministry of Education. In this case, reasons and necessity must be proposed, considered, agreed and approved by the Academic Sector Graduate Education Executive Committee (GEEC), Graduate School Academic Administrative Committee (GSAAC), University Executive Committee, Academic Council, and University Council.

Announced on 28 April, 2022

(Sign)

(Associate Professor Dr. Apichat Sopadang)  
Dean of Graduate School

## Contact /ช่องทางในการติดต่อ

### Academic Affairs and Student Development Section

งานบริการการศึกษาและพัฒนาคุณภาพการศึกษา.....

### Undergraduate Division/งานหลักสูตรปริญญาตรี

- Regular Programme /ภาคปกติ ..... (053) 942213
- International Programme /นานาชาติ ..... (053) 942213
- Double Degree Programmes /โครงการหลักสูตรควบสองปริญญา ..... (053) 942252

### Graduate Division/งานหลักสูตรปริญญาโท

- Regular Programme /ภาคปกติ ..... (053) 942251
- International Programme /นานาชาติ..... (053) 942251

### Doctoral Division/งานหลักสูตรปริญญาเอก

- International Programme /นานาชาติ ..... (053) 942252

Learning through Activities Section /งานการเรียนรู้ผ่านกิจกรรม ..... (053) 942250

Student Development Section /งานพัฒนานักศึกษา ..... (053) 942249

Cooperative Education Section /งานสหกิจศึกษา ..... (053) 942252

Head of Academic Affairs and Student Development Section /

หัวหน้างานบริการการศึกษาฯ ..... (053) 942212

Fax /โทรสาร ..... (053) 942202



งานบริการการศึกษา คณะเศรษฐศาสตร์ มช.



@ECONCMU



WWW.ECON.CMU.AC.TH